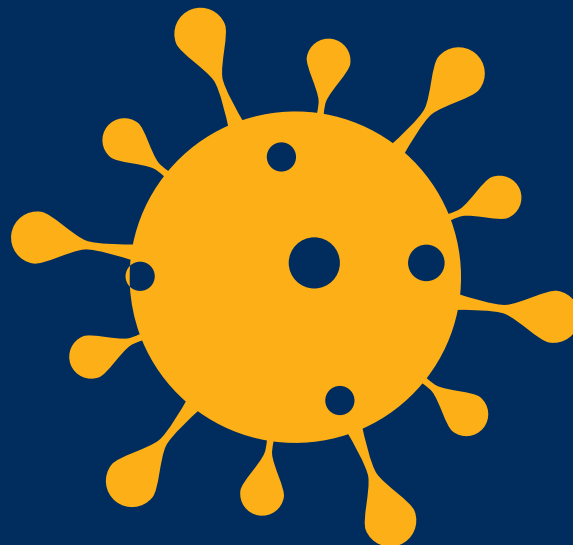




# Fluidnews

COVID-19 TESTING SOLUTIONS



RT LAMP / qPCR WORKFLOW ●

PIPETTES, TIPS & SERVICE ●

GILSON'S CONNECTED RANGE ●

POSITIVE DISPLACEMENT PIPETTES ●

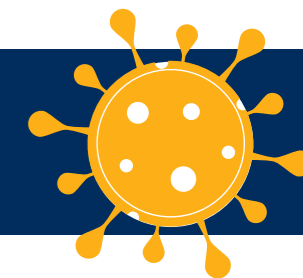
BENCHTOP INSTRUMENTS ●

AUTOMATED PIPETTING SYSTEM ●

AUTOMATED TUBE FILLING: VTM ●

GILSON SERVICES & SUPPORT ●

 **GILSON**<sup>®</sup>



## qPCR Testing Workflow For SARS-CoV-2

Here at Gilson, we provide a range of trusted lab solutions that can be easily integrated into your qPCR and RT-Lamp testing workflows to deliver reliable data and streamlined results. See how our instruments and services can support you throughout each step of the procedure using the icons below.



### Pipettes, Tips & Service

We offer various pipettes in a range of ergonomic designs and volume sizes that enhance your pipetting experience and help you achieve reproducible reliable results.

[LEARN MORE](#)



### Gilson Connected Tools

Connected Products, like our PIPETMAN® M Connected and TRACKMAN® Connected, enhance manual pipetting with the ability to add sample traceability in conjunction with intelligent pipetting.

[LEARN MORE](#)



### Automated Liquid Handling Instruments

Our automated systems facilitate reproducibility, which is imperative for sensitive analytical methods and high-throughput processing.

[LEARN MORE](#)



### Benchtop Products

Our high-performance benchtop devices provide durability, flexibility and reliability for a variety of applications.

[LEARN MORE](#)



## Integrating Gilson Tools Throughout The qPCR Workflow

Click on the icons to guide you to the specific Gilson tools.



Download the qPCR Workflow Guide

[DOWNLOAD NOW](#)

### Using RT-Lamp Instead?

See how our lab tools can fully support your SARS-CoV-2 RT-LAMP workflow.

[DOWNLOAD NOW](#)

Our pipettes, tips and services guarantee the precise control you need for sample and reagent volume transfers, ensuring the integrity of your samples and confidence in the reproducibility of your results. Ideal for highly sensitive qPCR workflows.



### Ergonomic & Reliable PIPETMAN Pipettes

As testing demand grows, so does the need for reliable sample processing. Gilson's manual pipettes help speed up throughput whilst providing low pipetting forces for superior comfort. In addition, all our PIPETMAN® models offer our legendary PIPETMAN® reproducibility, precision, and accuracy.



#### PIPETMAN® L – Increase Productivity Without Sacrificing Comfort

- ◆ Perfectly balanced and ergonomically designed to help increase daily productivity without fatiguing your hand.
- ◆ Patented volume locking system protects against accidental volume drift during pipetting cycles.
- ◆ Protects against cross-contamination – Fully autoclavable with no disassembly required for quick and simple decontamination.
- ◆ Available as single (variable or fixed volume), multichannels up to 1200µl and kits.

[LEARN MORE](#)



#### PIPETMAN® G – Legendary Pipetman With Minimised Pipetting Forces

- ◆ Feels like the original PIPETMAN® Classic but with lower pipetting forces.
- ◆ Offers PIPETMAN's legendary performance and durability.
- ◆ Available as single and multichannel pipettes and kits.

[LEARN MORE](#)



### Highest Quality Pipette Tips

Sample integrity is at the core of what we do every day and we know that starts with high-quality materials. Engineered to fit PIPETMAN® pipettes, our tips are made of the highest-grade materials in a sterile, clean-room environment, ensuring they are free of contaminants that can affect your results.

From positive displacement tips to sterilised filter tips, we offer an extensive range of tips with easy-to-identify packaging that fit your budget and research needs, ensuring sample integrity.



[LEARN MORE](#)



### Pipette Service & Calibration

As a manufacturer we know pipettes inside out, not only our own PIPETMAN® models but all brands of pipettes. Our accredited ISO 17025 Gilson Service Centres offer onsite clinics and a mail-in service of the highest standards. Choose from our three main programs; Lite, Pro or Premium, or your own custom plan if required, for complete confidence that your pipettes are performing at their best.

[LEARN MORE](#)

#### LITE

##### Dependable Preventative Maintenance

- Ideal for processing large quantities of pipettes quickly, and at low cost.
- Batch report provided (individual certificates not included).

#### PRO

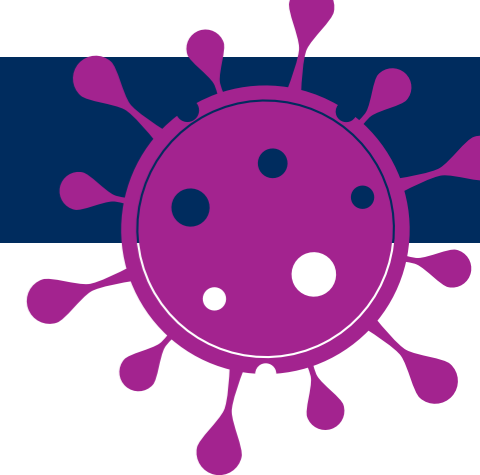
##### Dedicated Service For Trusted Results. As LITE and also including:

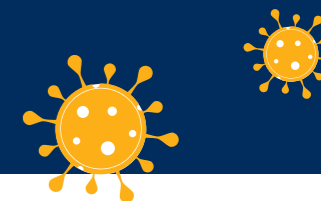
- Choose between: 2.2, 2.4, 3.5 & 3.10 calibration options.
- Calibration to: Manufacturer, ISO 8655 or customer's own specification.
- Combination of As found, As returned or As found + As returned available.
- Individual calibration certificates provided for all pipettes.

#### PREMIUM

##### A Lifetime Of Pipette Protection. As PRO and also including:

- All-inclusive service level, with parts (up to total value of £120/€120) and labour included.
- Incidental damage included.
- Pipettes under 1 year can be enrolled in Lifetime Warranty free.
- Pipettes between 1-10 year can be enrolled for a fee.





AMPLIPUR® EXPERT TIPS		
Volume Range	Description	Part Number
0,5-10µL	AmpliPur Expert Tips, FT10 (960)	F174101
1-20 µL	AmpliPur Expert Tips, FT20 (960)	F174201
10-200 µL	AmpliPur Expert Tips, FT200 (960)	F174301
100-1000 µL	AmpliPur Expert Tips, FT1000 (960)	F174401

### Excellent Fit Filter Tips For Molecular Biology Applications

Gilson's AmpliPur® Expert Filter Tips are in stock, ready-to-ship.

A preferred tool for molecular biology, certified free of RNase and DNase, supporting you in ensuring the limit of detection of your experiment, resulting in more sensitive nucleic acid quantitation.

### Excellent Fit

AmpliPur Expert Tips are designed to fit various manual and electronic pipette brands for maximum convenience on the bench. Equipped with a filter, they also help prevent cross-contamination.

### Ideal for Molecular Biology Applications

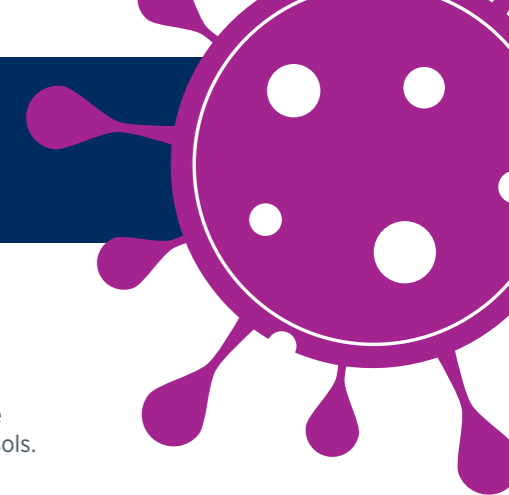
These tips significantly contribute to molecular testing performance by ensuring sample integrity during the pipetting process.

### ISO 8655 Compliant

Manufactured according to the certified Gilson quality standard, AmpliPur Expert Tips comply with ISO 8655 requirements and provide significant value for money.



[LEARN MORE](#)



With the pandemic putting communities at risk, scientists need to adopt operating procedures and protocols that are safe and very accurate. MICROMAN<sup>®</sup> E positive displacement pipettes, combined with Capillary Pistons, are perfect for handling highly hazardous, viscous or volatile fluids as they not only eliminate the risk of user, sample and pipette contamination but their precision is not affected by the properties of the sample.

## Overcoming Challenging Liquids in the Workflow

Unlike air displacement pipettes, positive-displacement technology uses an integrated piston inside the capillary that works like a syringe, eliminating the air cushion between the sample and the disposable piston. The properties of the fluid have no impact on the performance of the pipette, making it an essential must-have tool for every lab and every COVID-19 workflow.



### Regular Air Displacement Pipette

#### Unprotected air space

Vapour and aerosol contamination

Rarefied or "stretched" air pocket leading to accuracy issue when pipetting non-aqueous fluids



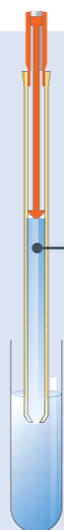
### MICROMAN<sup>®</sup> E Positive Displacement Pipette

#### No air space

Complete and reliable aspirating and dispensing viscous and density samples

No leaks when pipetting high vapour pressure liquids or viscous fluids

Accurate volume delivery regardless of sample temperature



## Benefits of MICROMAN<sup>®</sup> E

- ◆ Triple protection against contamination – no risk of sample carryover, protecting the pipette, the user and the sample from contaminated, hazardous substances or aerosols.
- ◆ Accurate, with the highest precision and repeatability - perfect for pipetting liquids such as volatile, viscous, hot or cold samples that can otherwise affect air displacement pipettes' volume delivery.
- ◆ Safe and convenient use - the CP's can be safely fitted onto the pipette in only two steps, thanks to the patented QuickSnap System. The volume switch button reduces the risk of accidental volume adjustment for complete confidence in your results.

LEARN MORE

## Discover MICROMAN<sup>®</sup> E in our Learning Hub

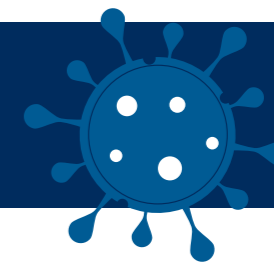
- ➔ [How to Pipette Volatile or Highly Contaminated Liquids](#)
- ➔ [How Positive-Displacement Pipettes Help to Improve Your Results](#)
- ➔ [Proper Use of Positive-Displacement Pipettes](#)

READ THE ARTICLES



Interested in integrating positive-displacement pipettes in your lab?

SHOP NOW



As rapid COVID-19 testing and screening become part of everyday life, so does the need for fast, efficient and traceable analysis not just in the lab but in the field too. By incorporating Gilson's Connected smart and portable devices into your workflow, you can maximise reproducibility and enhance the speed, quality and integrity of your results.

### TRACKMAN® Connected & PIPETMAN® M Connected

TRACKMAN® Connected guides you through your pipetting method to help prevent errors. When paired with PIPETMAN® M Connected, you can see where, when, and how much to pipette in real-time for complete traceability. Simple to set up and intuitive, TRACKMAN® Connected provides the advantages of automation - enhanced reliability, traceability, and reproducibility - without the large expense and complex setups, whilst retaining the flexibility of manual pipetting.

[LEARN MORE](#)

#### Key Benefits

- ◆ Improves traceability and reproducibility.
- ◆ Guides you through your pipetting protocol.
- ◆ Increases efficiency and reduces costly errors.
- ◆ Accelerates collaborative reporting.
- ◆ Generates reports as evidence of your tests.
- ◆ Changes volume automatically on the paired pipettes.
- ◆ Records all your data, pipetting actions, and environmental conditions.
- ◆ Portable for field-based experiments.



[WATCH THE VIDEO](#)



### Using Connected Tools in the Lab An Interview with Yun Zhao, Admera Health



Learn how Yun Zhao, Director of the Biopharma Services Department at Admera Health, an advanced molecular diagnostic company that focuses on personalized medicine, has integrated Gilson Connected tools into the lab.

*"Since TRACKMAN® Connected records every move, it helps us reduce errors by improving our accuracy. We're pipetting volumes as low as one or two microliters, so if our pipetting volume is off by just a tiny amount, it could cause our protocols to fail. I like how TRACKMAN® Connected helps me manage my pipetting volumes in an easy and traceable way."*

[READ THE ARTICLE](#)

### qPCR/PCR Wizard for TRACKMAN® Connected

Discover the five main benefits of using TRACKMAN® Connected's embedded qPCR/PCR template for your COVID-19 testing, including rapid protocol creation, access to sample information and how the program intuitively guides you through your workflow.

[DISCOVER PCR WIZARD](#)





Our high-performance benchtop devices provide durability, flexibility, and reliability for today's laboratories which can easily be integrated into your COVID-19 workflow. These devices offer innovative, dependable solutions for various applications, backed by Gilson's reputation for reliability.



### Digital Dry Baths

Perfect for heat inactivation of the virus and RT-LAMP development of tests.

- ◆ Uniform temperature delivery for a variety of tube sizes.
- ◆ 1, 2 and 4 block models available.

[LEARN MORE](#)



### Plate & Tube Centrifuges

Small, compact and ideal for mixing samples and reagents and removing air bubbles from PCR plates:

- ◆ Centry™ 117 Microcentrifuge.
- ◆ Centry™ 101 Plate Centrifuge.
- ◆ Centry™ 103 Minicentrifuge.

[LEARN MORE](#)



### Vortex mixers

High-speed mixing of samples and reagents, and mixing of Mastermix components:

- ◆ Mini Vortex Mixer.
- ◆ Vortex Mixer.

[LEARN MORE](#)

The 96-channel design of the PLATEMASTER® dramatically reduces the number of pipetting steps necessary to fill a microplate compared to regular manual multichannel pipettes. When using PLATEMASTER®, the time it takes to fill 96-well plates is significantly reduced to approximately 10-20 seconds or less, and 384-wells can typically be filled in less than a minute using only four pipetting steps.

### Key Benefits

- ◆ Increase accuracy, precision and reproducibility.
- ◆ Minimises pipetting errors.
- ◆ Significantly saves time and increases productivity.
- ◆ Requires no programming, no power and minimal training.
- ◆ Ideal for ELISA, qPCR, immunohistochemical reactions, kinetic assays.

[LEARN MORE](#)



[WATCH VIDEO](#)

See the PLATEMASTER® in action.

[WATCH THE VIDEO](#)



### Maximise Testing Capacity of qPCR Protocols

PIPETMAX<sup>®</sup> is the ideal automated pipetting workstation for the efficient processing of samples with standard pipetting heads including 8 x 200  $\mu$ L and 8 x 20  $\mu$ L. Its small footprint can easily fit into any lab and can support you throughout the COVID-19 testing workflow.

- ◆ Three new 4-channel heads are now available. The 4 x 1200 $\mu$ L head can prepare reagent plates used for automated RNA extraction whilst the 4 x 200 $\mu$ L and 4 x 20 $\mu$ L heads are perfect for transferring samples from tubes to your PCR plates.
- ◆ Highly reproducible qPCR sample preparation, eliminating user-to-user variability.
- ◆ qPCR Assistant creates automated qPCR protocols without the need for programming.
- ◆ Increases the number of samples that can be processed in parallel, expanding testing capacity while ensuring sample integrity.
- ◆ Reduces the time scientists have to spend working at the bench with hazardous samples and can be integrated under a hood.



### Key Benefits

- ◆ Low-cost entry-level automation.
- ◆ Flexible and versatile, can perform PCR, qPCR, cell-based assays, NGS prep, ELISA prep, and tip-based sample prep all on the same PIPETMAX<sup>®</sup>.
- ◆ Bespoke PCR cabinet with UV light and HEPA filtration.
- ◆ Final report tracks can be directly imported into your thermocycler.
- ◆ Large working volume dynamic range of 1 – 1200  $\mu$ L.

[LEARN MORE](#)

### Discover PIPETMAX<sup>®</sup> in our Gilson Learning Hub

- ➔ [Automated PCR preparation for 10s and 100s of samples](#)
- ➔ [APPLICATION NOTE: PIPETMAX: Automating 384-Well qPCR Plate Preparation](#)
- ➔ [PIPETMAX<sup>®</sup> for Automation of RT-qPCR Detection of SARS-CoV-2](#)

[READ THE ARTICLES](#)







Viral transport media (VTM) is a critical component of SARS-CoV-2 test kits, as it is used to collect, transport, and store clinical specimens.

As the demand continues to accelerate for mass testing and kits, so does the requirement to quickly fill transport tubes with VTM. Large-scale automated systems are often too costly, sizeable, and out of reach for most laboratories. Our compact, low-cost tube filling system has the flexibility to fill bottles, tubes, vials, or microplates easily and can help improve productivity.

#### Key Benefits

- ◆ Adjustable dispense head spacing.
- ◆ Flexible tube/vial/plate holders.
- ◆ Peristaltic pumping technology for dispensing.
- ◆ Small footprint for use in biosafety cabinets.
- ◆ Quick start-up and installation.
- ◆ Easy-to-sterile flowpath for zero contamination.



Gilson's Tube Filling System Setup



We can work with you to offer a fully customisable tube filling system to help increase your productivity and provide rapid installation to have you up and running quickly.

[LEARN MORE](#)

## Explore Gilson's Learning Hub

Discover our searchable content library with information to help support your research. Browse through articles, videos, application notes, webinars, and other resources related to your applications.

[VISIT GILSON'S LEARNING HUB](#)



### Using Gilson Liquid Handling Tools to Improve SHIELD T3 Saliva-based COVID-19 Test Workflow Efficiency

I-COVID is a rapid saliva-based COVID-19 test developed by the University of Illinois at Urbana-Champaign. We had the opportunity to interview Christian Messmacher, Chief Operating Officer of SHIELD T3, about the company, how their I-COVID test is expanding testing, and how he uses Gilson liquid handling tools to help facilitate the testing workflow.

[READ THE CASE STUDY](#)



### COVID-19 Testing: Create Efficiency & Traceability in Your PCR Workflows with TRACKMAN® Connected

Here, we describe the five main benefits of using the PipettePilot qPCR/PCR template for your COVID-19 testing, including access to sample information, how the program intuitively guides you through your workflow, and more.

[READ THE ARTICLE](#)



### Successful COVID-19 Testing Program using Gilson's Tools Is Helping Keep Schools Open

Dr Ed Campbell is a molecular virologist at Loyola University Chicago's Stritch School of Medicine who has taken on a new role as founder of SafeGuard Surveillance, a company running COVID-19 surveillance testing for school districts in the suburban Chicago area. See how PIPETMAX®, PLATEMASTER® and Gilson PIPETMAN® help facilitates testing.

[READ THE ARTICLE](#)

# Services That Support You



## High-Quality Pipette Service Made Easy

Our Gilson Service Centres of Excellence are the leader in pipette service with more than 65 years of experience in the industry.

Our facilities work in accordance to ISO 8655 and are ISO 17025 accredited calibration labs. Our flexible, tiered service offers are tailored to meet your needs and designed to maximise reliability and extend the life of your pipette.

[Request a quote now](#)



## Ensure Accuracy for Your Instruments

Our expert technicians and preventative maintenance services will keep your instruments running like new.

With regularly scheduled servicing, you'll extend the life of your systems and save time and money by avoiding unexpected interruptions to your work. Additionally, you can have confidence in the accuracy and reliability of your results because we'll ensure your instruments are operating within original specifications.

[Request a quote now](#)

To find your local Gilson office visit:  
[www.gilson.com/contact](http://www.gilson.com/contact)

 **GILSON**<sup>®</sup>